



REACH and the Steel Trade






Ian Sherwin, Chairman

REACH Seminar

London 02 September 2008



Agenda

- 13.45 Registration
- 14.00  ISTA – Reach and the Steel Trade
- 14.20  H.S.E. – General Overview of REACH
- 14.40  Corus – Trader Specific REACH Questions
- 15.10  Orgalime – The Only Representative
- 15.30  H.S.E. – REACH pre-registration
- 15.50 Panel – Q & A
- 16.30 End - Reception



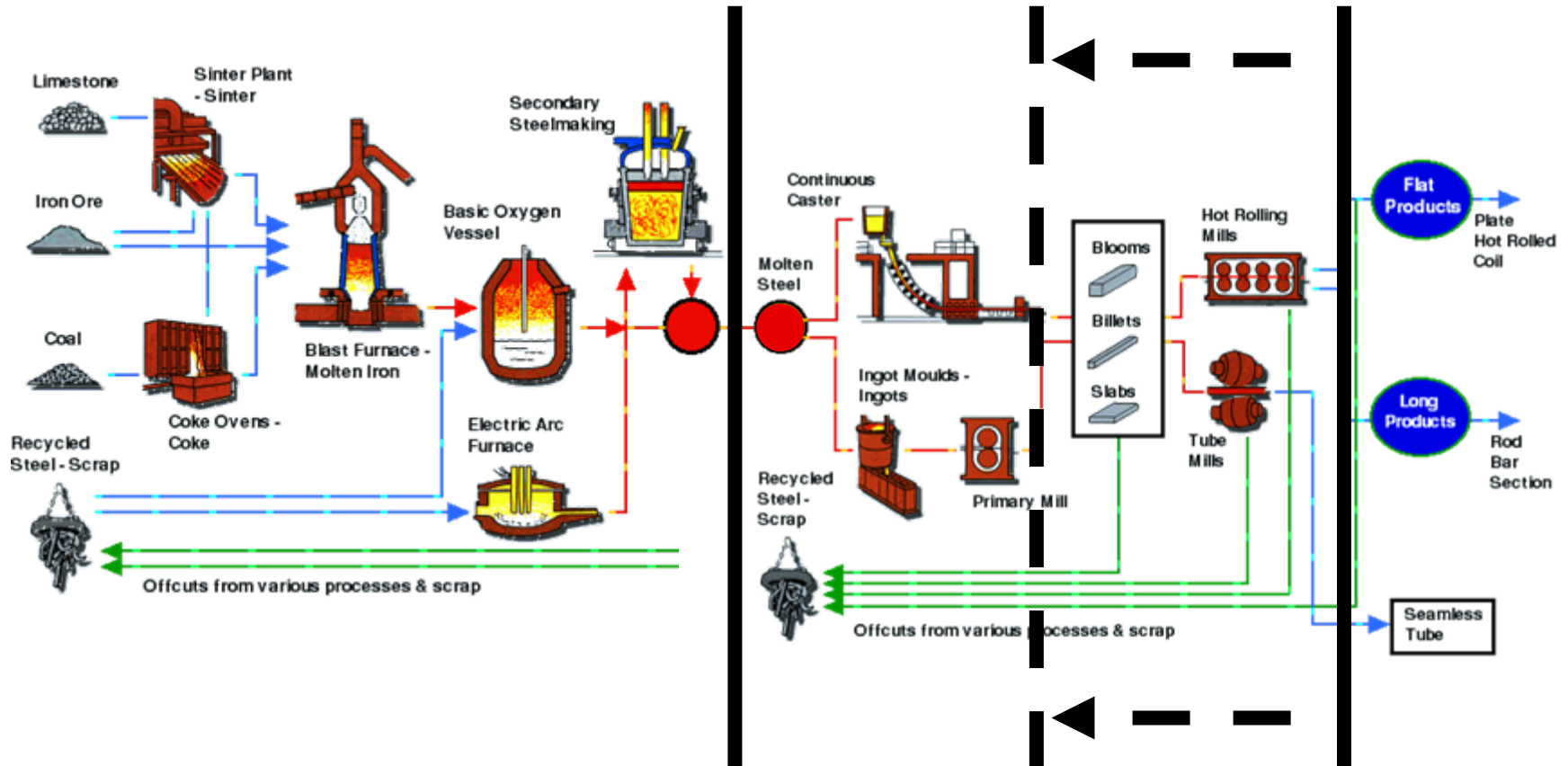
EU imports 2007

	Intra 27	ROW	Total
Iron Ore	39.0	144.0	183.0
Metallics excl scrap	4.0	11.8	15.8
Carbon steel semis	9.3	10.1	19.4
Carbon steel finished	78.3	32.3	110.6
Alloy semis	1.5	0.5	2.0
Alloy finished	17.9	3.4	21.3
Tubes	10.4	4.0	14.4

Data from ISSB and IISI



Where to draw the lines?



Substance

Preparation

Article



Questions, questions....

- Substance, Preparation, Article?
- CAS number, EINECS number?
- Exclusions for scrap, coal/coke...?
- Importer, Appointed Representative?
- What about Manufacturers and Users?
- Pre-register, Register, When?
- What does it cost?
- What happens if I don't register?
- Who will monitor imports?